

310224-SM-CC-EC

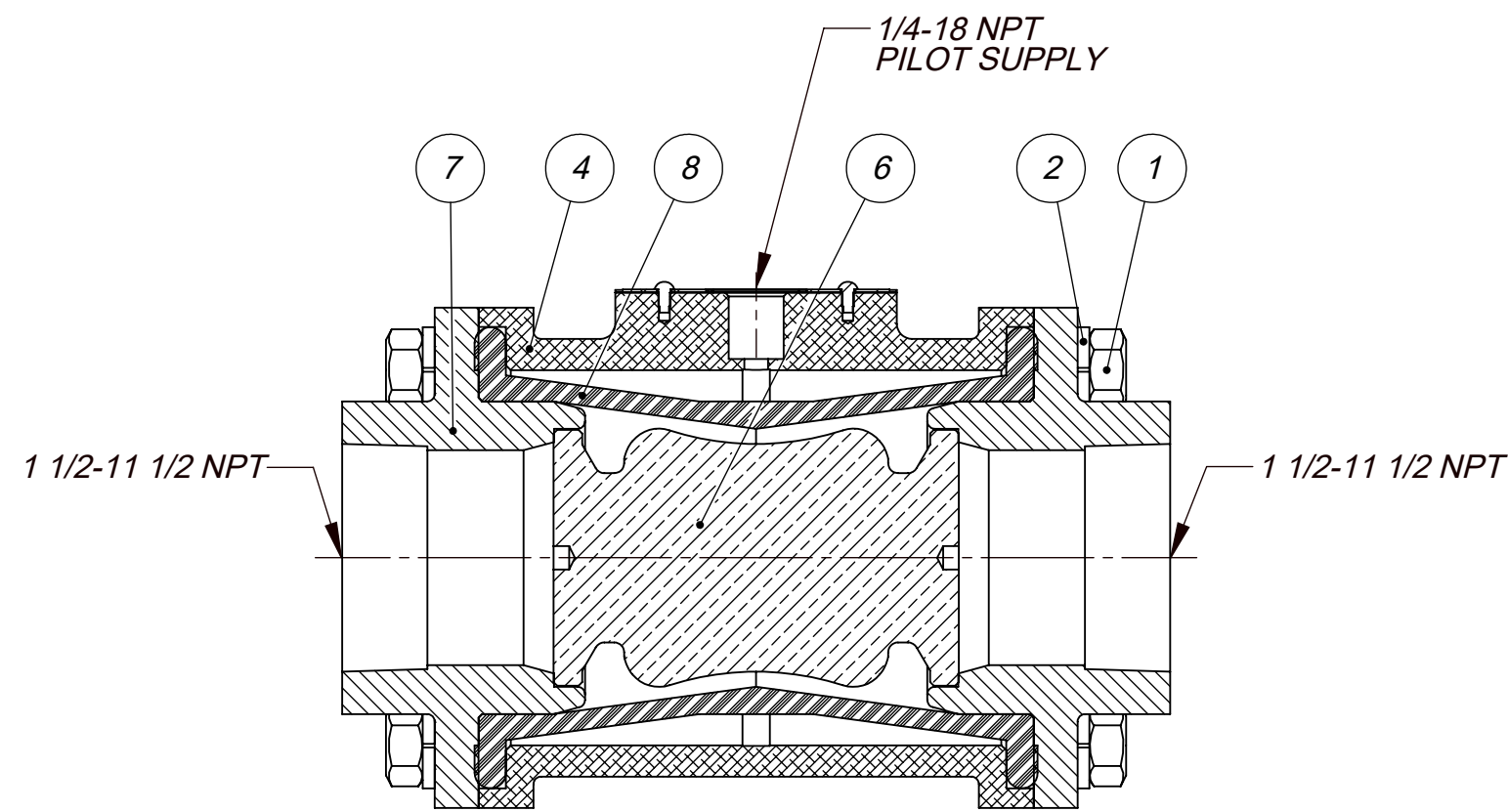
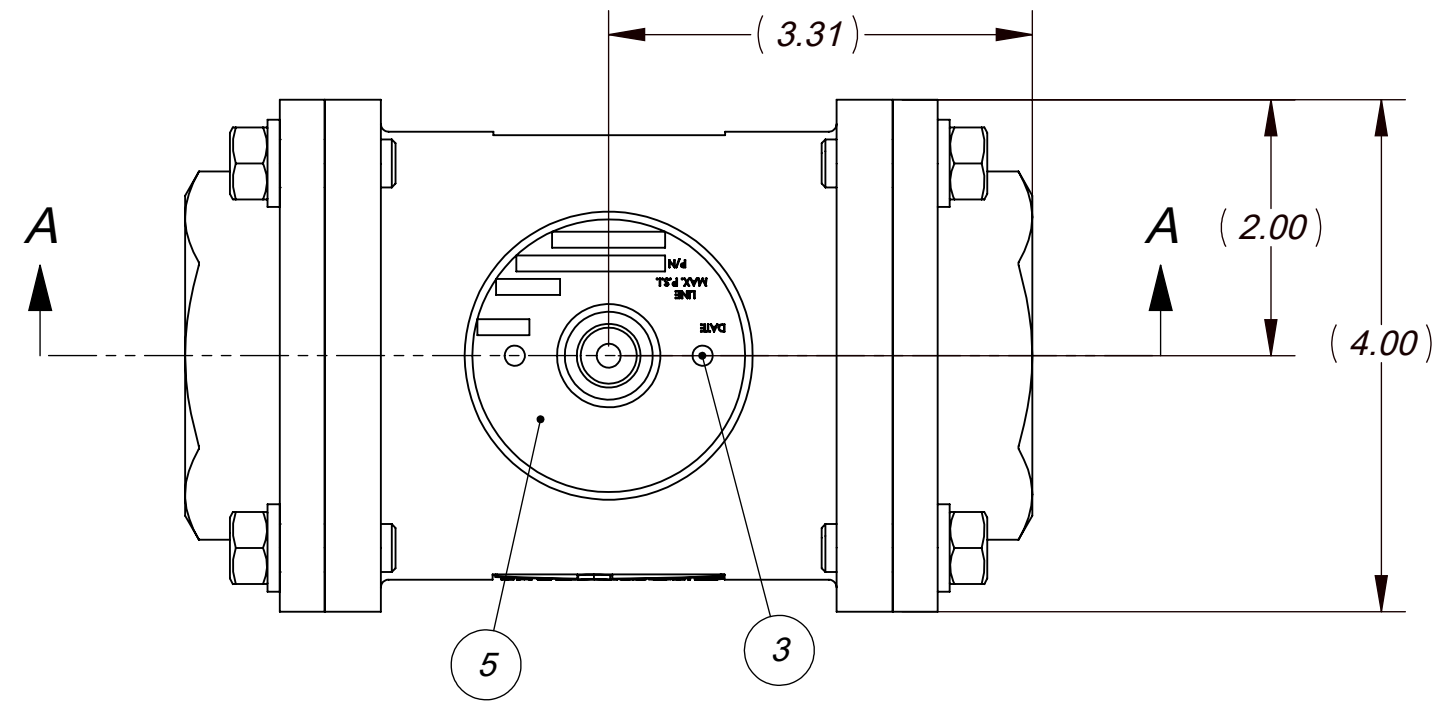
ITEM NO.	PART NUMBER	DESCRIPTION	QTY.
1	01-0151	SCR., 3/8-16 X 1.00, HEX HD. CAP, ZN	8
2	01-0200	WASHER, LOCK, 3/8 REGULAR ZINC	8
3	01-2023-2	SCREW, RIVET, #2 X .188, SS	2
4	20-1708	BODY, 1 1/4, 1 1/2 NPT T-O-M	1
5	20-1890	NAME PLATE, 1 1/4 -2 1/2 NPT, T-O-M	1
6	SEE TBL (CC)	CENTER CORE	1
7	SEE TBL (EC)	END CAP 1 1/2	2
8	SEE TBL (SM)	SLEEVE	1

SLEEVE MATERIAL OPTIONS (SM)		
CODE	MATERIAL	PART NO.
STD	BUNA - N	20-1112
26	VITON	20-1113
29	EPR	20-1114

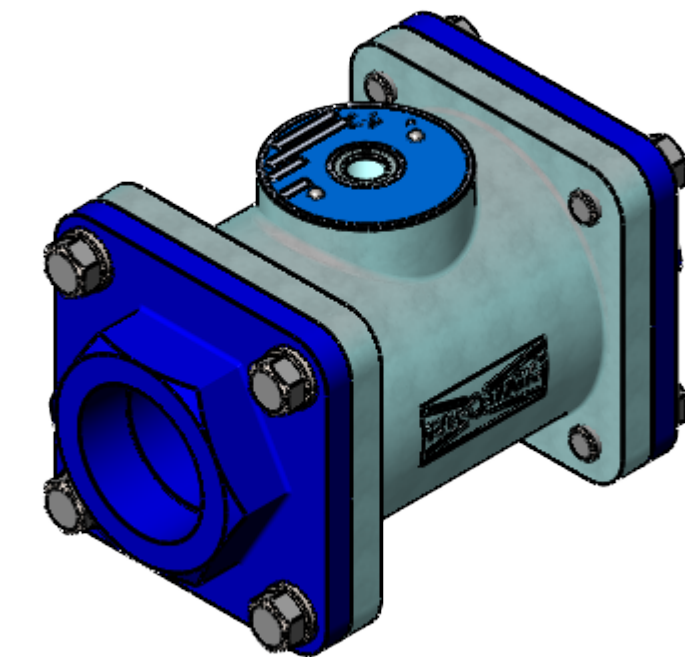
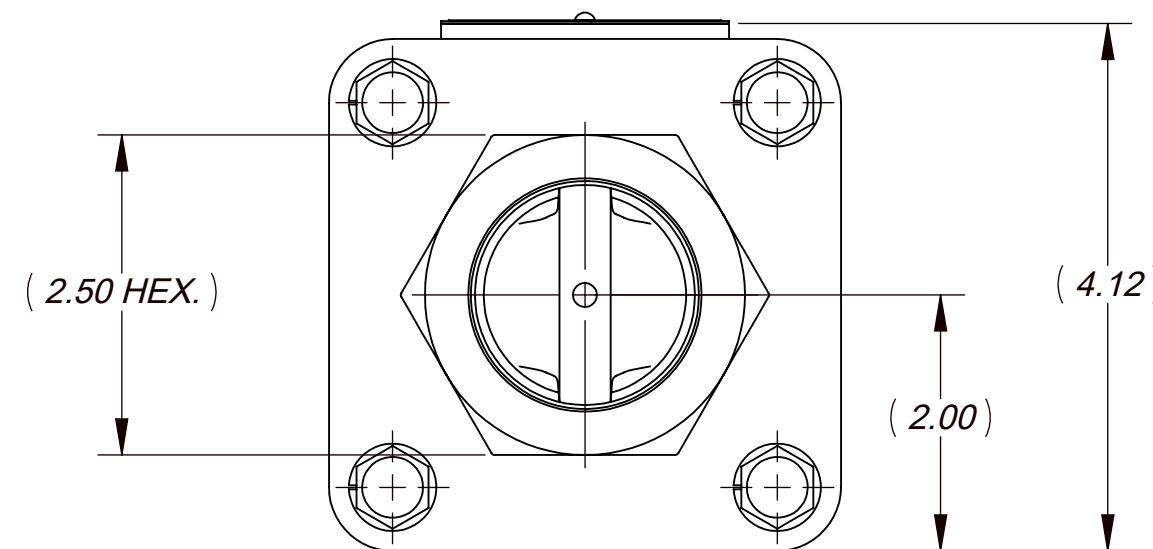
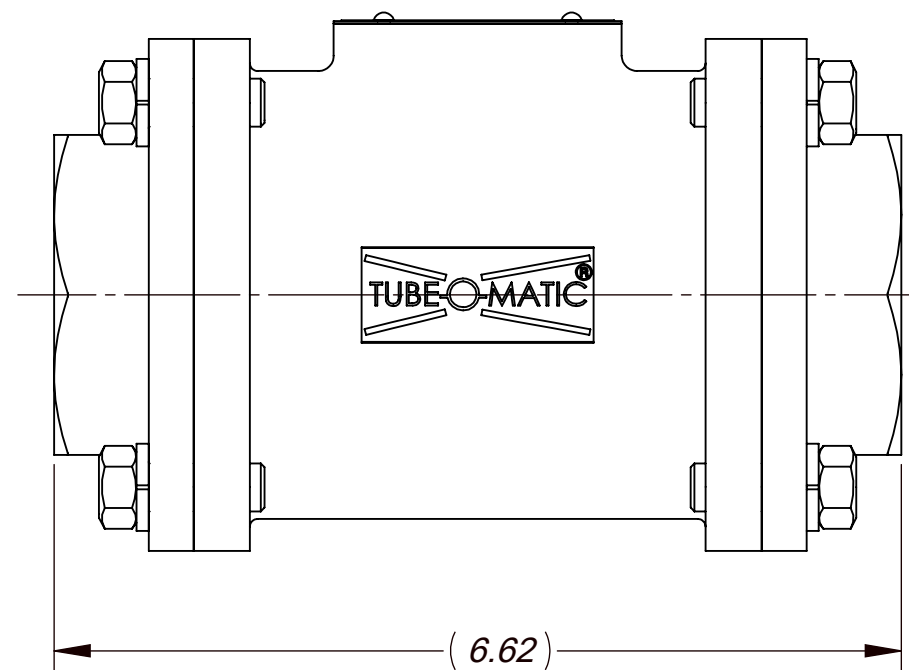
CENTER CORE OPTIONS (CC)		
CODE	MATERIAL	PART NO.
STD	NI PLT BRASS	20-1141

END CAP OPTIONS (EC)		
CODE	MATERIAL	PART NO.
STD	NI PLT BRNZE	20-1127

- NOTES:
- PILOT PRESSURE TO VALVE PRESSURE RATIO: 1:1
 - OPERATING PRESSURE: 150 PSI MAX.
 - TEMPERATURE RANGE: -30° F TO 225° F.
 - PRIMARY OPERATOR: DIRECT PILOT.
 - SERVICE MEDIA: LIQUIDS AND INERT GASES.
 - SLEEVE MATERIAL: SEE TABLE SLEEVE MAT. OPTIONS (SM) FOR ALL OTHERS CONSULT THE FACTORY.
 - FOR THE MAXIMUM SLEEVE LIFE, THE PILOT TO MEDIA PRESSURE DIFFERENTIAL SHOULD NOT EXCEED 20 PSI. FOR MEDIA PRESSURE BELOW 50 PSI, THE PILOT PRESSURE IS MEDIA PRESSURE PLUS 15 PSI.
 - ASSEMBLY REF. DIMENSIONS: (DIM.) = PLUS OR MINUS .07.



SECTION A-A
SCALE 1 : 1.5



ISOMETRIC VIEW

THIS DOCUMENT AND ITS CONTENTS ARE THE PROPERTY OF LEXAIR, INC. THEY ARE FURNISHED TO YOU ON THE FOLLOWING CONDITIONS:
 NO RIGHT OR LICENSE IN RESPECT OF THIS DOCUMENT OR ITS CONTENTS, EITHER OR WAIVED IN SUPPLYING THE DOCUMENT TO YOU.
 THIS DOCUMENT OR ITS CONTENTS ARE NOT TO BE USED OR TREATED IN ANY MANNER INCONSISTENT WITH THE RIGHTS OF LEXAIR, INC.
 OR TO ITS DETRIMENT AND ARE NOT TO BE COPIED, REPRODUCED, OR DISCLOSED, OR EXCEPT WITH ITS PRIOR WRITTEN CONSENT.

REVISIONS

A	REDRAWN TO CURRENT ENG. STDS. ECL: 06/09 10-04-06 HWP TPO
B	REDRAWN TO CURRENT ENG. STDS. ECL: 2/032 06-21-21 TES

ECL: 00000 00-00-00 INT

Tolerances Unless Otherwise Specified:		MATERIAL SPEC.	PC. NO.:
TYPE	FINISHED		
DEC .00	± .015"	SEE TABLE	310224
DEC .000	± .005"	SEE TABLE	MADE FROM:
FRACTIONAL	± 1/64"	SEE TABLE	MODEL FILE: 310224.SLDASM
ANGLES °	± 1/2°	SEE TABLE	CAD FILE: 310224.sldrw
FINISH 175 µ in.			
T-O-M ASSY, 1 1/2 STD.			C 310224
Lexair, Inc.		DRAWN HWP	CHECKED TPO
2025 Mercer RD, Lexington, Kentucky 40511		APRVD. TPO	SHEET NO. 1 of 1 SHEETS
		10-04-06	SCALE 1:1.5
		10-04-06	APPROX. WT. 9.949 lbs.